

MD5012A ME5 802.11a/b/g/n/ac Dual-band Indoor Wireless AP

Features

- Support IEEE 802.11a/b/g/n/ac
- Maximum transfer rate 300Mbps (2.4G) & 867Mbps (5.8G)
- Support wireless bridge and routing modes, which can flexibly deploy the network by adjusting the device network mode
- Support intelligent QoS function, through powerful message identification, priority setting, priority scheduling functions, realize the priority transmission of voice, video, or specified packets, and meet various business needs
- Support web management, making equipment installation and maintenance more convenient
- Support wireless controller (AC) management, realize remote centralized configuration and upgrade management
- Support 802.3at Protocol (POE)
- Support Din-rail installation
- Support Gigabit Ethernet port, adapt to multi-type network access
- Meet IP41 protection level



Description

MD5012A-ME5 dual-band wireless access point supports IEEE 802.11a/b/g/n/ac and MIMO.

The highest rate is up to 1167Mbps, the number of accesses can reach 128, supports AP/Client working modes to meet different application requirements.

It adopts POE remote power supply to make network deployment easier, and adopts Gigabit electrical port uplink to ensure wireless high-speed transmission; it is flexibly applicable to different network access schemes. It supports fat and fit AP mode to make sure it can be flexibly switched according to actual networking needs. Meanwhile, it supports wireless probe positioning function, supports seamless roaming technology, automatic detection and seamless switching to make sure users can roam without perception within the network signal coverage area.

MD5012A-ME5 can provide customers with stable wireless signal coverage to ensure that customers enjoy stable, high-quality, and convenient wireless network services; it supports point-to-point and point-to-multipoint relay bridges to achieve wireless coverage in areas where wiring is inconvenient. The product integrates several industry-leading achievements to ensure stable, reliable coverage and high-throughput performance in various scenarios.

Nanjing MAXON O.E. TECH. CO., LTD

Add: 6/F, Building A3, Zidong International Creative Park, Zidong Road, Qixia District, Nanjing, China.



25dBm high power

The highest output power can reach 25dBm, and the external omnidirectional 5dBi antenna brings excellent Wi-Fi signal transmission



Positioning service

Support wireless probe function, docking with positioning server, which can meet the positioning requirements of smart underground pipeline and factory



Easy to install

DIN rail installation



Protection Class IP41

Protection Class reaches to IP67, suitable for a variety of environments



2x2 MIMO

Supports 2x2 MIMO



High throughput

Maximum transfer rate 300Mbps (2.4G)& 867Mbps (5.8G)



Gigabit Ethernet

Supports Gigabit Ethernet



POE powered

Supports 100-meter Ethernet POE power supply, which is convenient for deployment and networking

Specification

| | | |
|----------|-----------------------|--------------------------|
| HARDWARE | Shell | Metal |
| | Host size | 120*111*36 |
| | Net weight | 430g |
| | Installation | DIN-Rail |
| | Protection class | IP41 |
| | Antenna Gain | 5dBi |
| | Antenna type | External omnidirectional |
| | Transmission distance | 0~100m |

MAXON

Link Of Your Think

Nanjing MAXON O.E. TECH. CO., LTD

TEL: 86-25-86380932

WEB: www.mxcomm.cn

E-MAIL: info@maxon.com

Nanjing MAXON O.E. TECH. CO., LTD

Add: 6/F, Building A3, Zidong International Creative Park, Zidong Road, Qixia District, Nanjing, China.

| | | |
|----------|----------------------------------|--|
| HARDWARE | Power supply mode | 48V 0.5A POE/DC 24V~48V |
| | Maximum power consumption (W) | < 12W |
| | Maximum transmit power | 2.4G: 25dBm; 5.8G: 24dBm |
| | WAN Connector | 100/1000Mbps |
| | LAN Connector | 100/1000Mbps |
| | Button | 1x Reset |
| | Indicator | 1x POWER , 1x STA, 1x 2.4G, 1x 5.8G, 3x signal strength |
| | Working temperature | -40℃~70℃/-40~158℉ |
| | Storage temperature | -40℃~85℃/-40~185℉ |
| | Working humidity | 5%~95%RH non-condensing |
| | Surge immunity | POE/GE: common mode 4KV, differential mode 2KV |
| | Electrostatic discharge immunity | Contact discharge: 6KV, Air discharge: 8KV |
| | Mounting kit | 1 x Product Instruction Manual 1 x Product Certificate & Warranty Card |
| SOFTWARE | Protocol | 802.11 a/b/g/n/ac |
| | Maximum speed | 1167Mbps |
| | Frequency range | 2.4G: 2412~2472MHz 5.8G: 5180~5320MHz, 5745~5825MHz |
| | Channel width | 20/40/80MHz |
| | Working Mode | Access Point, Client, WDS Access Point, WDS Client |
| | Security configuration | WPA2-PSK, hide SSID, IP/MAC filtering |
| | Application Mode | Access Point, Client |
| | Configuration management | support web configuration, support AC remote management, support SNMP management |
| | Ethernet software features | support IPv4/IPv6 dual protocol stack DHCP Server/Client, DNS, HTTPS, IPv4, LLDP, Proxy ARP, SMTP, SNMP, v2c/v3, Syslog, TCP/IP, SSH, UDP, |

MAXON

Link Of Your Think

Nanjing MAXON O.E. TECH. CO., LTD

TEL: 86-25-86380932

WEB: www.mxcomm.cn

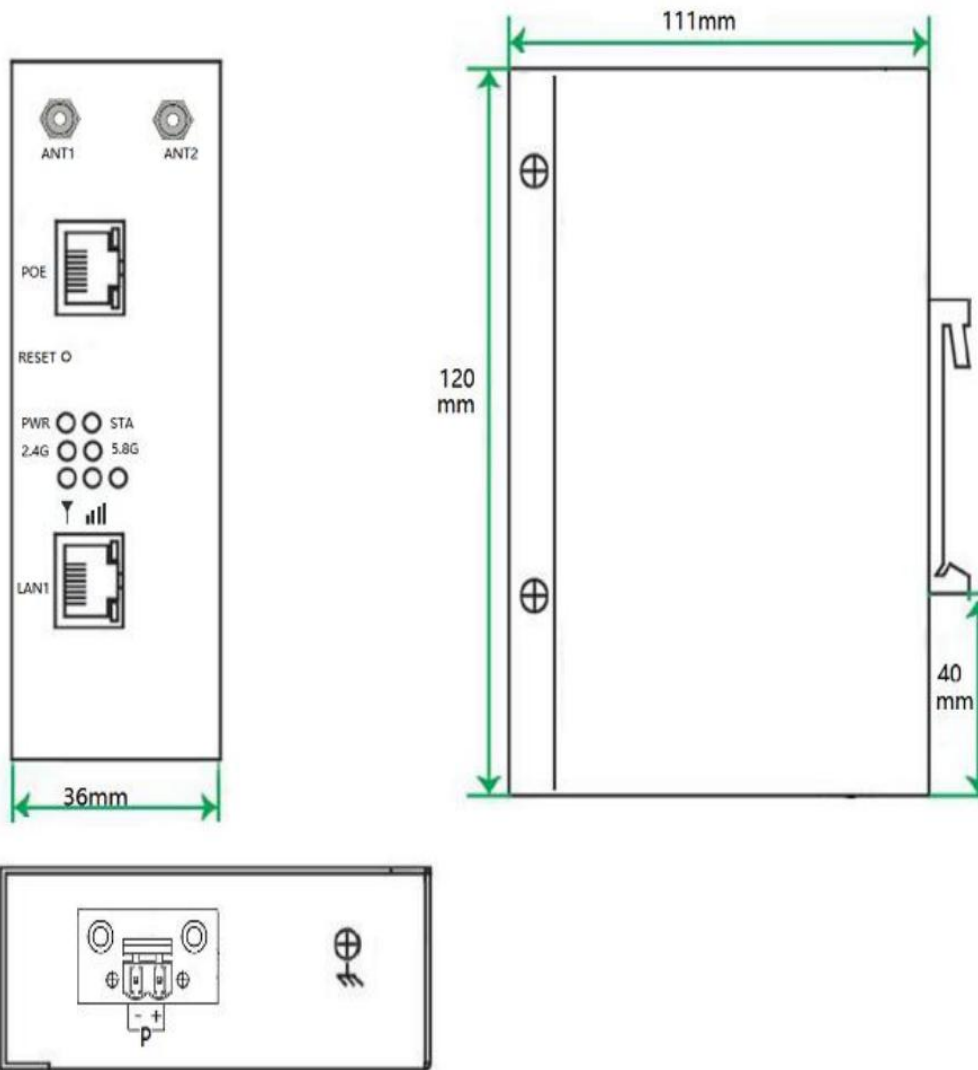
E-MAIL: info@maxonc.com

Nanjing MAXON O.E. TECH. CO., LTD

Add: 6/F, Building A3, Zidong International Creative Park, Zidong Road, Qixia District, Nanjing, China.

| | | |
|----------|-------------------------------------|--|
| SOFTWARE | Dynamic frequency selection | support intelligent channel analysis & automatic optimal channel selection support 5GHz DFS |
| | Intelligent Bandwidth Rate Limiting | Support IP and MAC-based upstream and downstream rate limiting |
| | Others | Scheduled restart, QoS, Watchdog |

Dimensions



MAXON

Link Of Your Think

Nanjing MAXON O.E. TECH. CO., LTD

TEL: 86-25-86380932

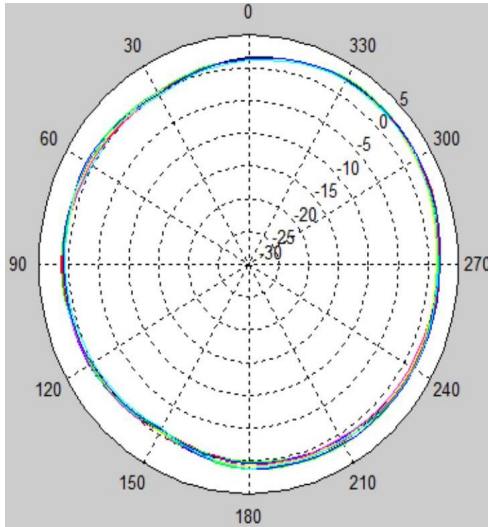
WEB: www.mxcomm.cn

E-MAIL: info@maxonc.com

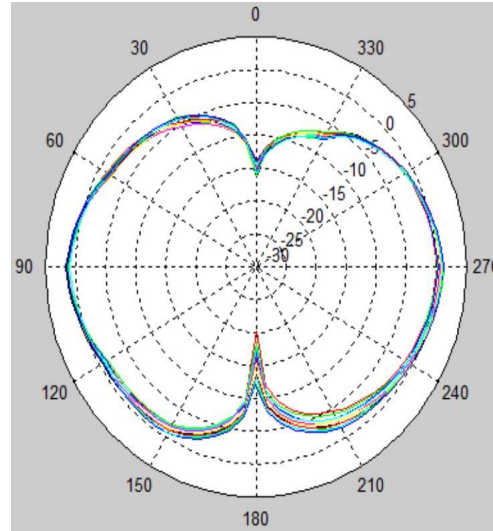
Nanjing MAXON O.E. TECH. CO., LTD

Add: 6/F, Building A3, Zidong International Creative Park, Zidong Road, Qixia District, Nanjing, China.

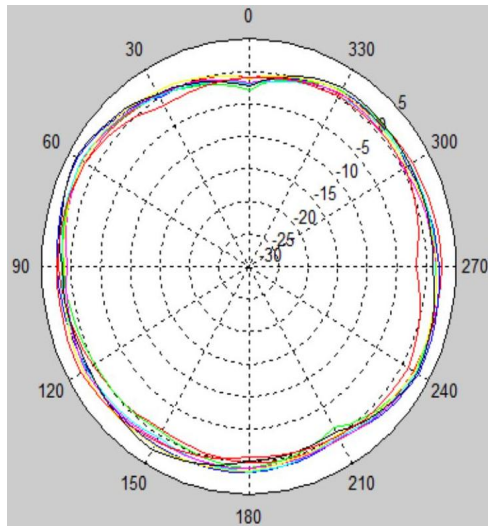
Antenna Radiation Pattern



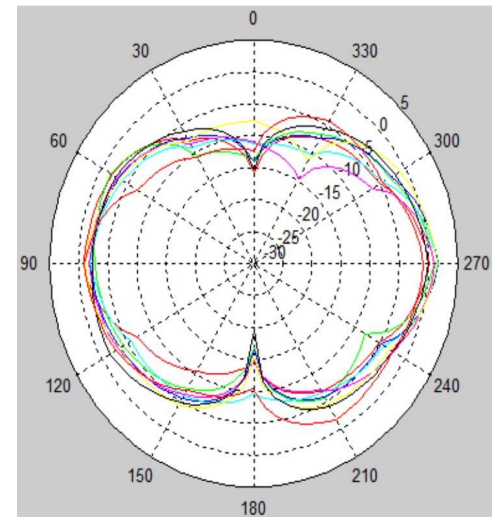
2.4G horizontal pattern



2.4G vertical pattern



5.8G horizontal pattern



5.8G vertical pattern

MAXON

Link Of Your Think

Nanjing MAXON O.E. TECH. CO., LTD

TEL: 86-25-86380932

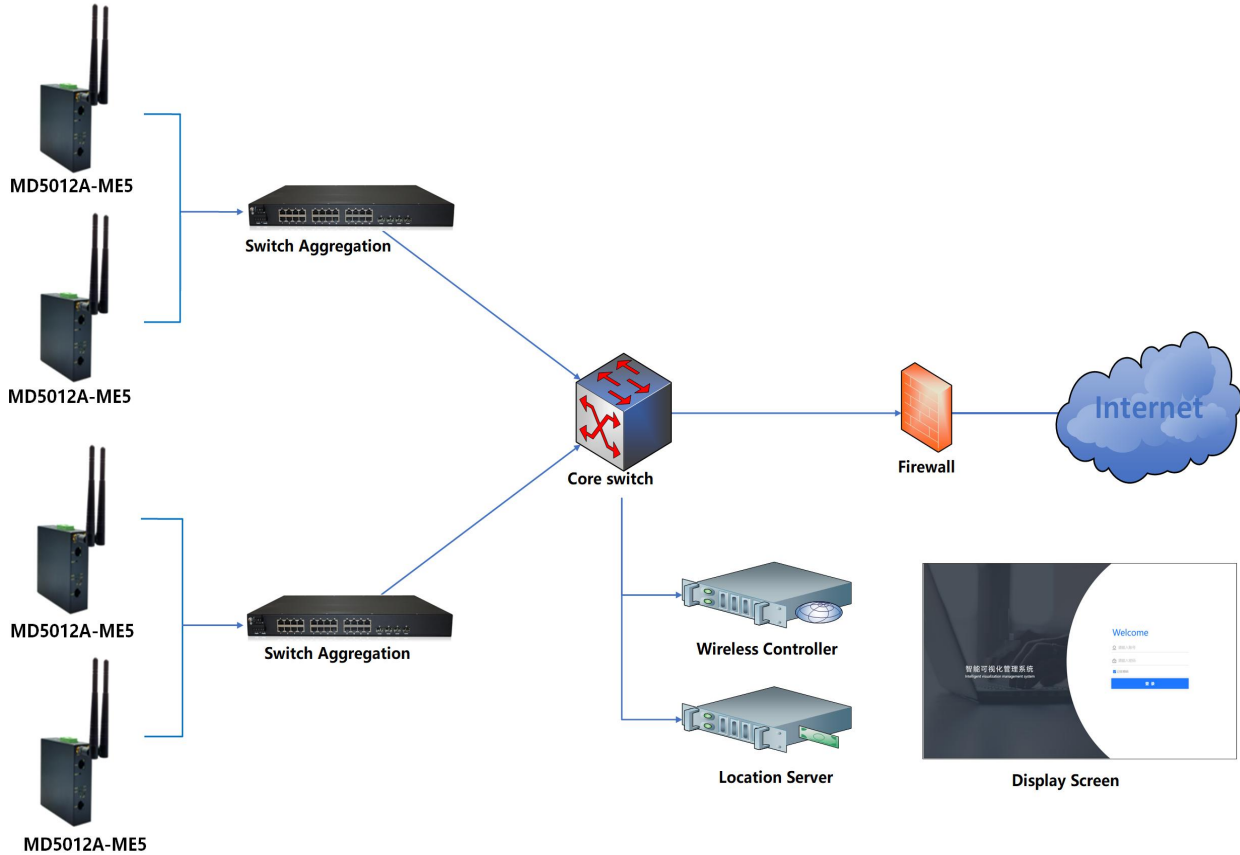
WEB: www.mxcomm.cn

E-MAIL: info@maxonc.com

Nanjing MAXON O.E. TECH. CO., LTD

Add: 6/F, Building A3, Zidong International Creative Park, Zidong Road, Qixia District, Nanjing, China.

Application



MAXON

Link Of Your Think

Nanjing MAXON O.E. TECH. CO., LTD

TEL: 86-25-86380932

WEB: www.mxcomm.cn

E-MAIL: info@maxonc.com